



E-News

for friends of Emerge! Center Against Domestic Abuse

Creating change. Changing lives.

January 2011

In This Issue

[Thank You](#)

[Tax-Free IRA Contributions](#)

[Special Thank You's](#)

There's Only 48 Hours Left!

There are only 48 hours left to make charitable donations that can be taken off of your 2010 State of Arizona tax bill!

As an organization that provides services to all types of people from all walks of life, we qualify as a "Working Poor Tax Credit" organization. The Working Poor Tax Credit is a **dollar-for-dollar** charitable contribution you can give to qualifying nonprofit organizations. With Arizona's Working Poor Tax Credit you can receive a dollar-for-dollar tax credit (up to \$200 for individuals, and up to \$400 for couples filing jointly) on your state income taxes while **helping victims of domestic violence- at no cost to you.** Click [here](#) for more details on Arizona's Working Poor Tax Credit. To donate online, click [here](#).

[Find us on Facebook](#) 

Thank You For Making Holiday House a Huge Success!

The Emerge! Holiday House was a huge success this year thanks to the amazing generosity of the Tucson community.



In response to the call for donations, our community donated more than 3300 gifts, along with cash and gift cards, providing over 500 participants in our shelter, outreach, housing, and child care programs numerous gifts for themselves and their families.

Holiday House is also our largest volunteer effort of the year, engaging more than 120 community members for the event. It takes approximately 40 people per day to help with decorating and set-up, help participants select and wrap their gifts, look after the little ones while moms shop, and help keep the shelves stocked and the refreshments fresh. Many of these volunteers worked several shifts!

As always, a number of employee, student, and social groups participated in raising

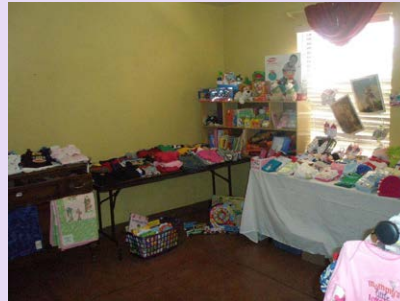


[View our Spring/Summer 2010 Newsletter by clicking here.](#)



money, hosting gift drives, and volunteering. While the groups are too many to mention them all, we want to specifically recognize and thank the local Curves women's fitness clubs for their support in all aspects of this year's event. Curves staff and club members from all corners of Tucson came together to donate "boatloads" of gifts as well as dozens of hours of their time.

Emerge! also thanks the 2010 planning committee volunteers for all of their hard work preparing for and managing the event, including Connie Carroll, Carrie Hess, Joy Bennett, Margie Leitch, Kathy Huff, Bob Evans, Christina Ketcham, and Emerge! intern Amanda Wilson.



Preparations for the event begins as early as mid summer. If you are interested in serving on the planning committee for Holiday House 2011, please contact Michael at michaelw@emergecenter.org or call 520-795-8001, x7008.

Charitable IRA Distribution Opportunity is Once Again Available!

Important legislation which provides for tax free charitable gifts direct from IRA accounts has been signed into law and is effective immediately! On December 17, 2010, the President signed into law The Tax Relief, Unemployment Insurance Reauthorization, and Job Creation Act of 2010. This bill restores the IRA Charitable Rollover for 2010 and permits its use in all of 2011. The act is retroactive to January 1, 2010.

If you have an IRA, you may want to consider using your IRA to make gifts to Emerge!. Here is what you need to know about this legislation:

How it Works

- IRA owners now can make "qualified charitable distributions" up to \$100,000 per year from their IRAs. The distributions to charity, which would otherwise be taxable, are excluded from gross income for federal tax purposes under this law.
- The exclusion applies to traditional and Roth IRAs. Other retirement plans such as 401(k), 403(b), SEPs, and SIMPLE plans are not eligible.
- Donors must have reached age 70-½ by the date of contribution to qualify for this exclusion.
- The exclusion is in effect for 2010 and 2011 only. IRA owners can give up to \$100,000 each year in 2010 and 2011.
- Because Congress acted so late in the year, individuals can complete an IRA charitable rollover through **January 31, 2011** and still count it as a 2010 IRA charitable rollover.
- The charitable gift must be made directly from the IRA trustee/administrator to the charity. If you accept a distribution and forward the funds to charity, the distribution

will not qualify for the exclusion and will be considered taxable income.

- The exclusion applies only to outright gifts from IRAs. Charitable gift annuities, charitable remainder trusts, and other similar gift arrangements do not qualify.
- Charitable gifts from IRAs will not be eligible for a charitable income tax deduction.
- Qualified contributions may be counted toward the Minimum Required Distribution (MRD) for a donor's IRA accounts.

Giving Opportunities to Consider

You may benefit the most from the new IRA gift rules if:

- You do not itemize tax deductions;
- Your charitable deductions have been maximized;
- You do not need the additional income necessitated by your minimum required deduction;
- You live in a state that does not allow charitable deductions; or
- You are subject to the 2% rule that reduces your itemized deductions.

There are numerous other considerations to be weighed under this law, including if you have multiple IRAs, if you have nondeductible contributions, and the impact of state income taxes. Please consult with your tax or financial advisor regarding your situation before making any gift.

For more information, please contact Tana Jones, Director of Development, at (520) 795-8001 or email tanaj@emergecenter.org.

This information is not intended as tax or legal advice. Please consult an attorney or professional advisor about your specific situation.

Domestic Abuse Calls Increase After Holidays

The National Domestic Violence Hotline (NDVH) statistics show when the holiday season is over, the rate is 5% higher for the following two weeks.^[i]

It is not known whether the increase after the holidays is because of proximity of the abuser preventing call-ins during the holidays or whether some effect from the holidays causes a temporary desire to stay with the family. It is important to note that numerous stressors can exacerbate abuse and alcohol consumption can decrease inhibitions at any time of year. The national (1-800-799-SAFE) and local (1-888-428-0101) domestic hotlines are available 24/7 throughout the year. Be ready to share the numbers with someone that may need them or keep them in a safe place for you

^[i] As quoted in National Resource Center on Domestic Violence [NRCDV] and VAW Net, Technical Assistance Guide, November 30, 2010

Special Thank You's

Ironwood Ridge High School Students

Thank you to all the students at Ironwood Ridge! They provided hundreds of gifts to our women and children again this year!

McMurray Charities, Inc.

Thank you for investing in safety for the families of Southern Arizona. We appreciate your recent donation from your staff!

Northern Pima County Women's Journal

Thank you for your generous donation of a year of space in your publication. We are able to provide more awareness to our community because of you!

Scanlon Memorial Tennis Tournament

Their donation is helping us to continue to provide the opportunity to create, sustain, and celebrate a life free from abuse.

Southwest Energy

We are grateful for your commitment to providing safety to women and children in Southern Arizona!

Vantage West Credit Union

Their recent gift will help many children recover from the effects of domestic abuse to help break the cycle of violence! Thank you!

Ensure a Safe Future... Join the Frances Power Cobbe Circle

When planning your estate, ensure a sustained future for families by becoming a member of the Frances Power Cobbe Circle. Frances was instrumental in the passing of legislation in 1878 that provided protection to married women and their children living in domestic violence situations.

Gifts of appreciated stock, real estate, IRA gifts, life insurance, and other assets are accepted. Please speak with your tax consultant. If you have already designated support in your estate plan, please let us know so we can recognize your generosity. Call Tana Jones, Development Director, at 795-8001, x7009 or tanaj@emergecenter.org for more information.

[Join Our Mailing List!](#)

