



In This Issue

[Our Latest Success Story](#)

[Emerge! Commemorates Five Years!](#)

[Coffee with the CEO](#)

[Mother of the Year Luncheon](#)

[Emerge!'s Domestic Abuse Workshop](#)

[Our Monthly Wish List](#)

[Special Thank You's](#)

[Support Denim Day!](#)

[Find us on Facebook !\[\]\(4b7a79268f6ba26c1471d4232fffa85a_img.jpg\)](#)

[Donate Now](#)

[Join Our Mailing List!](#)

Volunteer Needs

Crisis Line Advocate:
As a crisis line volunteer you will answer crisis calls, assess the safety of callers, assist in clarifying needs, issues and concerns, provide referrals for local resources and screen for

Our Latest Success Story

Stacy has been through a lifetime of violence. She was raised in a home where she experienced sexual, mental, and physical abuse. Stacy left the



abusive environment at a young age and lived on the streets for many years. She jumped from relationship to relationship looking for love. Stacy desperately wanted to find someone who would love her unconditionally, but thought that would never happen for her.

A little over a year ago, Stacy thought she'd met the perfect guy. He was charming and quickly swept her off her feet. They moved in together and started a new life. Three months into the relationship her boyfriend became verbally abusive. It quickly escalated to physical abuse. At first, Stacy thought she had caused the abuse... [click here](#) to read more.

Emerge! Commemorates Five Years!

entry into our programs. Crisis line volunteers will receive training on procedures and protocol. We are currently seeking assistance for two day shifts and one evening shift between the hours of 8am and 8pm.

Childcare Center Volunteer:
Our center works with infants to school age children. We are in search of volunteers to help with activities and speech therapy. The center is open Monday-Friday 6am-6pm. Hours are flexible.

Voices Against Violence Center Assistant:
As a center assistant volunteer you will assist with administrative projects, answering the phone, monitoring the entrance and assisting participants. The schedule is flexible; we could use assistance any time during normal business hours, Monday through Friday.

Program Support Assistant:
We are in search of a volunteer to help us with our weekly errands. The primary duties would be to pick up food and diapers for the shelter. The schedule is flexible. A background check and training is required.

Children Center Kitchen Volunteer:
We are in search of volunteer to help in our kitchen. Duties will include: washing dishes and cleaning up after snack and lunch time. Some food handling training is required. Preferred time is 11am-1pm, days are flexible.



Five years have now passed since Emerge!'s debut as the local domestic abuse service provider. Today we are strong and well equipped to serve the community because of our long, rich history. In 2008, our merger

brought together a combined 78 years of experience. The merger was between Tucson Centers for Women and Children (founded in 1975) and the Brewster Center Domestic Violence Services (founded in 1963). The knowledge gained in those 78 years was well preserved and in practice today.

Over the last five years Emerge! has transformed itself into an efficient, cutting-edge icon in the field of domestic abuse service provision. Today we are one of the few across the nation to adopt revolutionary programs like Housing First, setting a ground-breaking example. Even more telling is the way we choose to interface with the families seeking our services-not by offering them a list of the programs we have available, but by assessing their individual needs and providing or helping them find the resources they really need to be successful.

Help us celebrate and continue to free families from abuse.

[Donate Now](#)

Coffee with the CEO

Please join us (and bring a friend) for coffee and a presentation with Emerge!'s CEO, Sarah Jones. Learn more about our innovative and holistic services. Hear from a special guest who triumphed after years of domestic abuse.

Thursday, April 11, 2013

If you are interested in volunteering with Emerge! please contact Michele at volunteer@emergecenter.org.

Current Job Openings

Bilingual Center Assistants:
We have full and part-time openings, as well as on-call positions available. Center Assistants work at our residential center to ensure efficient daily operations of the residential center while ensuring safety and support for participants. Bilingual (English/Spanish) required. Our on-call staff provide coverage on an as-needed basis with no set schedule or guaranteed hours. The shelter operates 24/7. Associates degree and one year of experience in customer service. Social service experience is a plus.

Program Support Associate:
The Program Support Associate is responsible for maintaining programmatic systems and operations for all sites. This position also provides administrative support to all domestic abuse programs. Associate's degree and two years administrative experience or an equivalent combination of education and experience. Excellent computer skills in Microsoft Office Suite programs to include Outlook, Word, Excel and PowerPoint. Travel required between Emerge! locations.

If you are interested in

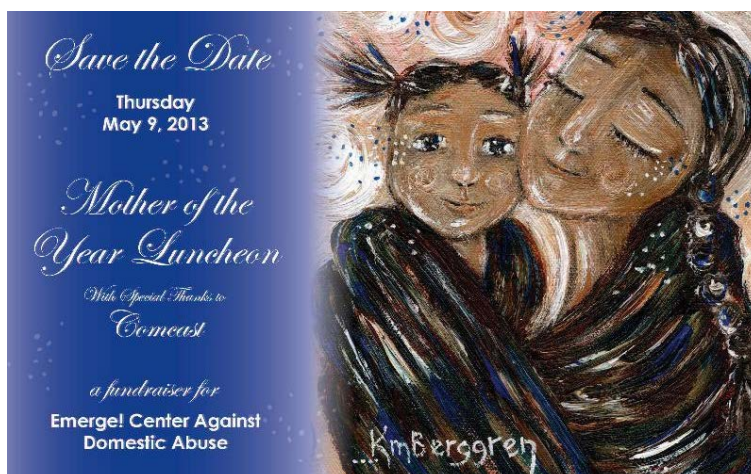
8:00-8:45 a.m.

The Lipsey Center 2545 E Adams
Street Tucson, AZ 85716



Due to limited space, RSVP is required. To RSVP or for more information, contact Robin Kasly, Development Associate, at 520-795-8001, or robink@emergecenter.org.

Mother of the Year Luncheon



Emerge! serves many mothers who would go to the end of the earth to protect their children. Each year we choose one mother, a mother who has displayed exceptional courage and strength. At our Mother of the Year Luncheon we tell her story, and celebrate her bravery. This 12th annual event will also honor the service of our CEO for seven years, Sarah Jones.

Help us celebrate!

12th Annual Mother of the Year Luncheon
Thursday, May 9, 2013, 11:30 a.m. to 1:30 p.m.
(Auction and raffle start at 10:30 a.m.)
Westin La Paloma Resort

Single Tickets \$75 Each
Purchase your tickets today! Call 520-795-8001 ext. 7013 or purchase online. To purchase online [click here](#).

applying, please [click here](#).

When entering your gift online make sure to choose "Mother of the Year Luncheon" under Special Campaigns/Events.

Our 2013 Sponsors:



Tucson Lifestyle



Emerge!'s Domestic Abuse Workshop

Emerge! offers a free domestic abuse workshop for the community. This three-hour workshop provides a thorough overview of domestic abuse. It includes the dynamics of domestic abuse, power and control, effects of abuse on children, how to help, safety planning and Emerge! services.



Our next workshop will be:
April 15, 2013: 9am-12pm

If you are interested in attending one of these workshops, please RSVP by email at outreach@emergecenter.org or contact Sarah Jiménez-Valdez at 520.795.8001.

Emerge!'s Monthly Wish List

Every month Emerge! posts a monthly wish list on our website. This is a list of needed items that are necessary to ensure we can provide the families that come to us in crisis with their basic needs. Your gifts help build new, empowered lives!

Our most needed items this month are:

- Cash
- Gift Cards



Towels

- Used Cell Phones



revised monthly wish list.

We have changed our agency wish list! Due to storage space restrictions, we have recently revised the list of items we can keep on hand. [Click here](#) to view our newly

Donate Now

Special Thank You's

Touchstone Foundation: Their donation will provide many safe nights to the families leaving abusive situations. Thank you!

Jim Click Automotive Team: Their donation supports our annual Mother of the Year Luncheon. Thank you!

Children's Museum Tucson: Their donation is helping us continue to provide much needed support to children that are affected by domestic abuse. Thank you!

University of Arizona Medical Center: Their donation supports our annual Mother of the Year Luncheon. Thank you!

Jim and Shirley Lipsey: Their donation supports our annual Mother of the Year Luncheon. Thank you!

*These gifts were made between: 2/26-3/25

Support Denim Day!

Every year since 1999 Peace Over Violence has organized Denim Day in LA & USA. It is a rape prevention education campaign, where we ask community members, elected officials, businesses and students to make a social statement with their fashion statement and on this day wear jeans as a visible means of protest against misconceptions that surround sexual assault.

The Denim Day campaign began in 1999 with CALCASA and LACAAW, the Los Angeles Commission on Assaults Against Women, as part of an international protest of an Italian Supreme Court decision to overturn a rape conviction because the victim was wearing jeans. The Italian Supreme Court dismissed charges against a 45-year old rape suspect because his 18-year-old victim was wearing jeans at the time of the attack. The Court stated in its decision that "It is common knowledge...that jeans cannot even be partly removed without the effective help of the person wearing them....and it is impossible if the victim is struggling with all her might." The judgment sparked a worldwide outcry from those who understand coercion, threats and violence go along with the act of rape. The unpopular verdict became an international symbol of myth-based injustice for sexual assault victims.

Denim Day is an outward example of how a community can help change people's perceptions about violence against women, men and children. You can support this campaign by:

- [Wearing denim on April 24, 2013](#)
- [Wearing the "Why Denim?" button available through CARE.](#)
- [Talking about the court case and other harmful myths that exist about sexual assault.](#)

For more information about the Denim Day Campaign, please visit www.denimdayusa.org.

-

[Forward email](#)



This email was sent to communications@emergecenter.org by communications@emergecenter.org | Instant removal with [SafeUnsubscribe™](#) | [Privacy Policy](#).

Emerge! Center Against Domestic Abuse | 2545 East Adams Street | Tucson | AZ | 85716