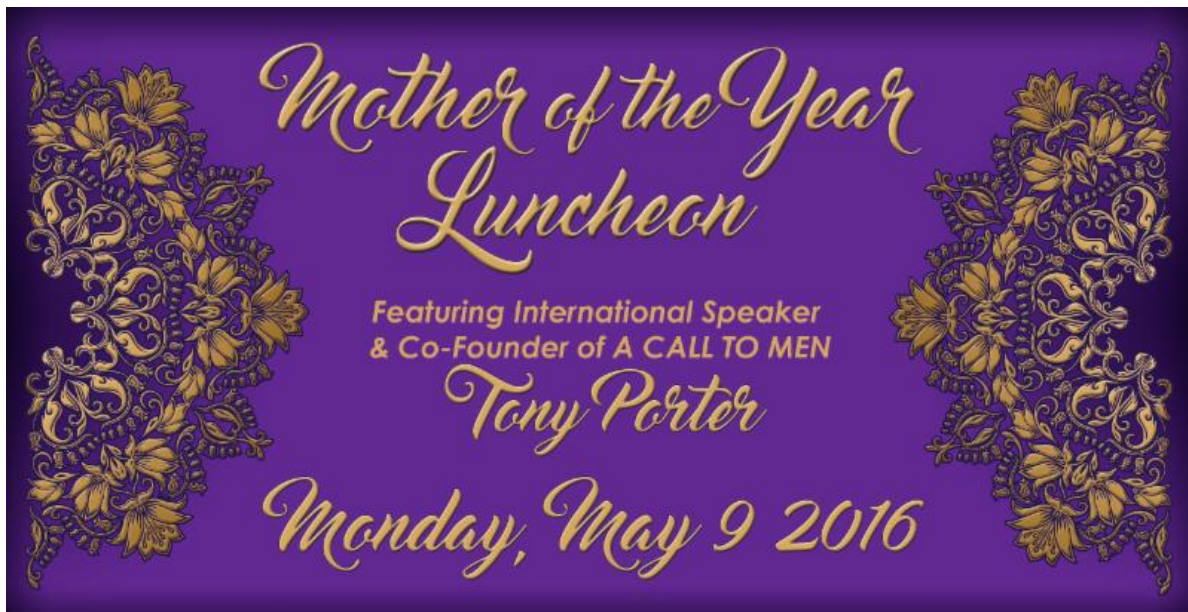




[Careers](#) * [Coming Events](#) * [Wish List](#) * [Donate](#) *
[Volunteer](#)

Mother of the Year Luncheon

Celebrate the Strength of Mothers Overcoming Domestic Abuse



Please join us on **Monday, May 9th at the Westin La Paloma**. This year, we will also welcome internationally speaker Tony Porter, co-founder of A CALL TO MEN, who will engage us with a powerful look at the underlying causes of intimate partner violence, and speak to the ways in which men and boys can positively impact these social issues.



Kathy's Story

Kathy was living in fear. After calling the Emerge! hotline, she came into shelter and was relieved to have a safe and confidential place to stay. Once she settled in, she told her case coordinator about the time she was hospitalized by her ex-boyfriend. Before she checked out of the hospital, she had ended the relationship...

[Read More >](#)

Be A Changemaker

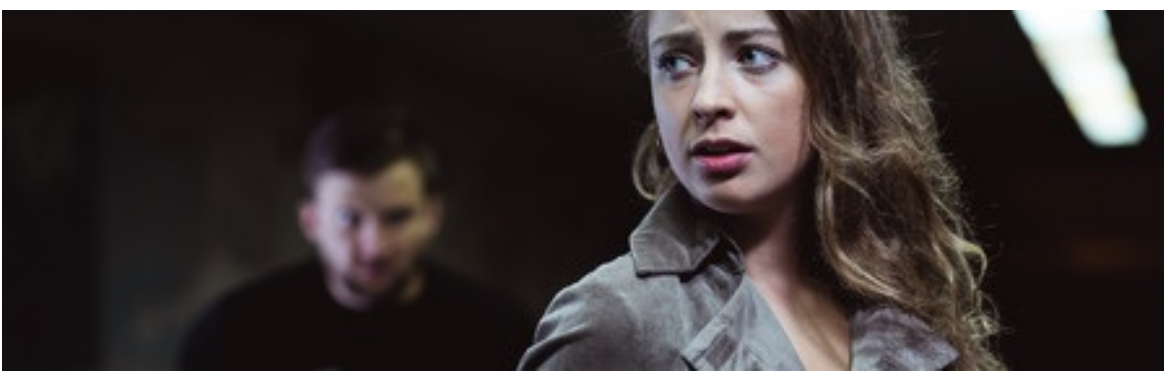
Emerge! employees are making a positive impact on their community every day, with a strong supportive team behind them. [Check out our current openings](#) and [great benefits package](#).

 [Forward to a Friend](#)

Spread the word! We're always looking for great candidates. [Forward this message](#) today!

Intimate Partner Stalking

Most Commonly Committed by Current or Former Partners



Having your daily activities monitored by a current or former partner is frightening and dangerous. While stalking can often be romanticized, it is a behavior that can escalate to more serious and dangerous acts. In fact, being stalked may indicate that someone is at risk of being seriously harmed or even killed. [Read More >](#)



Want to Participate?

1. Attend **Coffee with the CEO** on February 19th
2. Share a link to this month's **participant story** on your social media account
3. Start a conversation - use these **tips to talk to kids & young people** in your life about healthy relationships



Wish List

At this time, the following items would greatly help the survivors we serve. They can be dropped off at **2545 E Adams St., 85716.**

- Gift Cards (Grocery, Target, Walgreens, etc.)
- New Warm Blankets (twin to queen size)
- New Towels and Pillows

Thank You to Project Period

A Partnership with the YWCA of Southern Arizona



The majority of the women who arrive at the Emerge! shelter are fleeing a dangerous situation at home and many of them have a limited time frame to gather any belongings. Join the Project Period initiative for collecting feminine hygiene products for people in crisis.

The YWCA of Southern Arizona has created a community initiative called Project Period that will help women and girls in need. Emerge! is a collection site for the initiative and will be able to distribute donations to our participants. Thank you **Project Period!**

Special Thanks to Our Supporters!

Thank You to our November through December 2015 \$1000+ Donors

Agero ~ Alpha Chi Omega Foundation, Inc.

Caroline Anderson ~ Armstrong McDonald Foundation

Bank of America Charitable Foundation

Benevity Community Impact Fund ~ Lois Briggs ~ Cheryl Brink

Cardinals Charities ~ Susan Chandler

Community Church at Saddlebrooke

Connie Hillman Family Foundation ~ John Davis

Desert Christian Schools ~ Joan Donnelly and David Taylor

Ellis Foundation ~ Eugene C. and Wiletta F. Denton Family
Foundation

Frederick S. Upton Foundation ~ Larry and Sharon Kephart Fuller

Shelly Little Gibbons ~ Dr. Harvey Goodman and Mrs. Judith
Goodman

Harry and Marjorie Stewart Foundation ~ Joseph Heller, Ph.D.
In-N-Out Burger Foundation ~ K2GMELK Giving Fund
Stanley and Karen Kissinger
Kenneth Koput ~ LeCroy & Milligan Assoc., Inc.
Lichtenheld Family Foundation ~ Philip P Maharaj-Prasad, M.D.
Milton and Tamar Maltz Family Foundation
Monica Moore M.D. and James Smith ~ Steven Oscherwitz
Shelley Phipps ~ Phoenix Suns Charities
PICOR Charitable Foundation
Employees of Southwest Gas ~ Darlene Streicher
Thomas and Jeanne Elmezzi Private Foundation
Gay and Paul Tosch ~ Tucson Electric Power Company
U.S. Charitable Gift Trust ~ United Way of Tucson and Southern AZ
Verizon Wireless ~ Voyager Summer Chapel
William and Mary Singer Foundation ~ Jack and Jo Zingg

**Bring safety and hope to survivors of domestic abuse -
support Emerge! programs and services today!**

Give Safety

Forward this email

STAY CONNECTED



*Names, photos and identifying details have been changed to keep Emerge! participants safe.